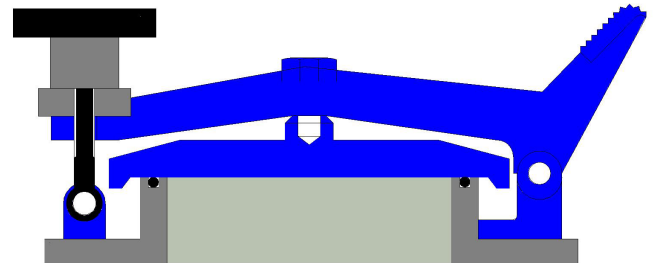


Product Highlights

- Screw Down, Lockable & Free Lift Options
- Size range 2" (50 mm) - 12" (300 mm)
- Standard body materials - Aluminium, Carbon steel, Stainless steel
- Standard trim material - Stainless steel
- O'ring seals
- Standard full form flanges - ANSI / DIN / JIS / Specials
- Alternative materials for hazardous applications
- Non standard applications consult factory



B500 SD

Features

Low cost maintenance

Lightweight design provides easy handling whilst interchangeable components ensure standard parts are easily replaced

Testing / Quality

All products are factory tested and fully certified.

Self Draining

All products are designed so that any condensate drains away from seating areas.

Internal Parts

Internal parts are stainless steel as standard. Non standard materials available upon request.

Connections

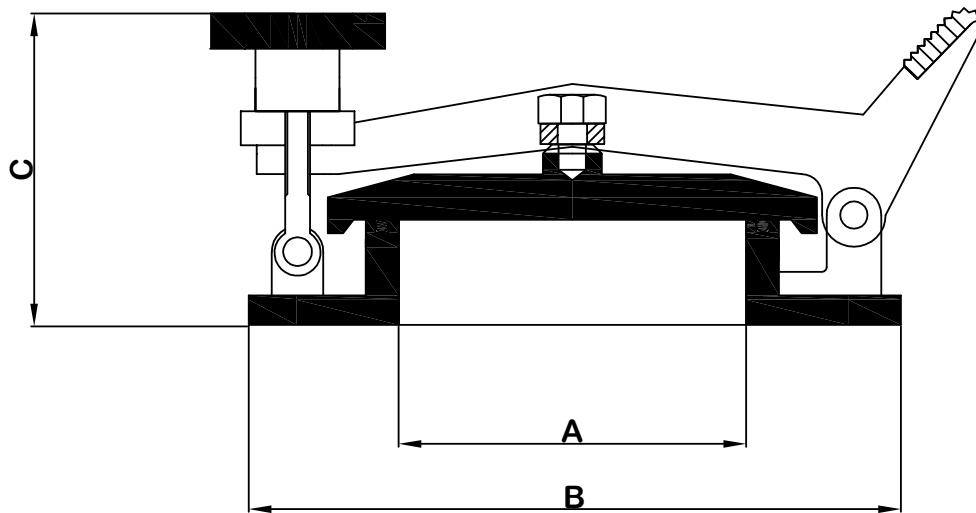
All valves are supplied with full form flanges to meet individual requirements. Other connections are available upon request.

Non Standard Applications

There are numerous options available for special applications. Exotic materials such as Hastelloy and various plastics can be offered to suit the most hazardous of environments. Special coatings can be applied for extreme service. For low temperature duties, internal parts can be PTFE coated to prevent seizure.

See separate section in catalogue.

* All products are subject to continuous development and subsequently 3B Controls reserve the right to change specifications outlined in this catalogue without notification.



Dimensions

NOM SIZE	A	B	C
80 (3")	76	190	110
100 (4")	102	229	116
150 (6")	152	279	129
200 (8")	203	343	142